

Custom Office Design

Laminate (2024, Q3)

Standard Laminates are available in 3/4" & 1-1/8" (Low Pressure TFM), and 1 1/4" Thick Material (High Pressure Laminate)

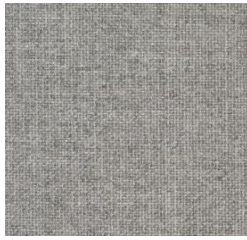
Please note: Screen/Print color may vary from actual product.

Blond Echo			Hardrock Maple
Fawn Cypress			Coppered Artisan Walnut
Walnut Heights			Cafelle
Summer Flame			Red Mahogany
Absolute Acajou			Studio Teak
Grey Elm			Raw Nordic Wood
Fog Grey			Slate Grey
White			Black

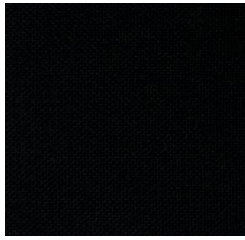
Custom Office Design

Panel and Acoustic Textiles (2024, Q3)

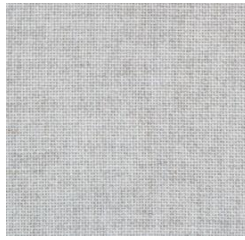
Please note: Screen/Print color may vary from actual product.



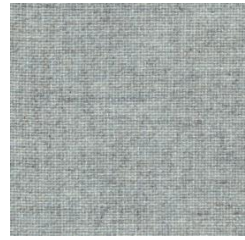
(2100-238)
FR701, Grey Mix



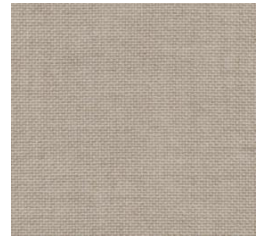
(2100-408)
FR701, Black



(2100-538)
FR701, Silver Papier



(2100-561)
FR701, Verte Papier



(2100-758)
FR701, Desert Sand



(2335-2027)
Anchorage, Wolf



(2335-2034)
Anchorage, Straw



(2335-2035)
Anchorage, Angora



(2526-010)
Crosstown, Cement



(2526-030)
Crosstown, Ray



(2526-070)
Crosstown, Stucco



(2526-080)
Crosstown, Buff



(2858-010)
Lido, Hermosa



(3582-011)
Spinel, Opal



(3582-050)
Spinel, Sandstone

Looking for something different?

While this page displays only the textile patterns and colorways which we standardize on, Custom Office Design has access to a vast range of additional patterns and colorways with similar pricing, and we encourage our customers to peruse our supplier's website for additional options to fulfill their project needs by visiting:

<https://duvaltex.com/en-us/contract-textiles/panel-acoustic>

Request quote with custom selection to ensure pricing

All standardized Custom Office Design textile offerings adhere to the following performance guidelines as defined by the Association for Contract Textiles (ACT)



See Duvaltex/Guilford of Maine product listing for exact product details

Custom Office Design

Surface Hardware (2024, Q3)

Please note: Screen/Print color may vary from actual product.

No Additional Charge to Include



#7 U-shaped
96MM C-to-C
Brushed Nickel finish



#5 Bow
96MM C-to-C
Matte Black finish

List Cost \$14/Each



#1 Arched
128MM C-to-C
Matte Chrome finish



#2 Curved
128MM C-to-C
Satin Nickel finish



#3 Bar
96MM C-to-C
Brushed Nickel finish



#16 Inside Rounded
96MM C-to-C
Brushed Nickel finish



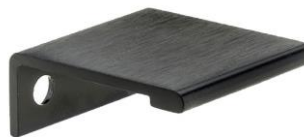
#11 Black Knob
1 1/4" Diameter Knob
Black Nickel finish



#12 Nickel Knob
1 1/4" Diameter Knob
Brushed Nickel finish



#13 Large Stat
50MM C-to-C
Brushed Black



#14 Small Stat
25MM C-to-C
Brushed Black

Side Pulls (not depicted) also available at Tier-1 Additional Charge

List Cost \$40/Each



#9 Black Spoon
32MM C-to-C
Matte Black



#10 Nickel Spoon
32MM C-to-C
Matte Nickel