

Custom Office Design

Standard Laminate Finishes (2023, Q3)

Standard Laminates are available in 3/4" & 1-1/8" (Low Pressure TFM), and 1/4" & 1/4" Thick Material (High Pressure Laminate)

Please note: Screen/Print color may vary from actual product.

Absolute Acajou
Note
Vashon Series
not available
with this finish



Studio Teak

Blond Echo



Hardrock Maple

Summer Flame



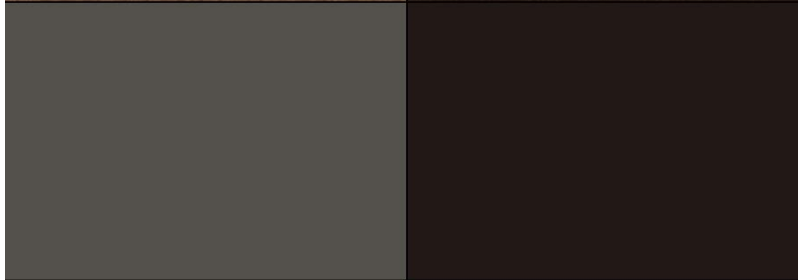
Red Mahogany

Walnut Heights



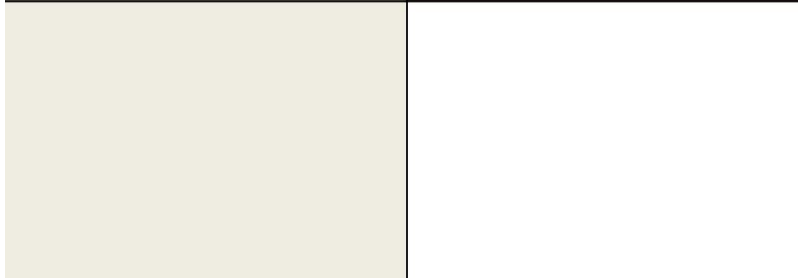
Cafelle

Slate Grey



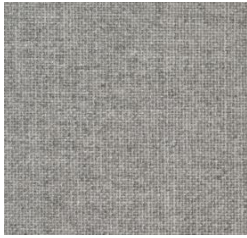
Black

White

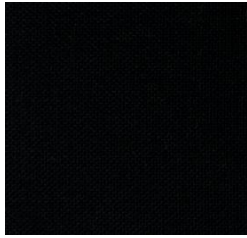


Custom Office Design Standard Textiles/Fabric (2023, Q3)

Please note: Screen/Print color may vary from actual product.



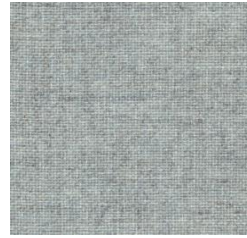
(2100-238)
FR701, Grey Mix



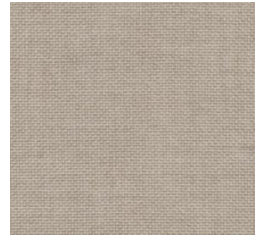
(2100-408)
FR701, Black



(2100-538)
FR701, Silver Papier



(2100-561)
FR701, Verte Papier



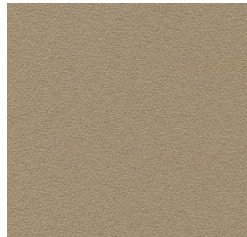
(2100-758)
FR701, Desert Sand



(2335-2027)
Anchorage, Wolf



(2335-2034)
Anchorage, Straw



(2335-2035)
Anchorage, Angora



(2526-010)
Crosstown, Cement



(2526-030)
Crosstown, Ray



(2526-070)
Crosstown, Stucco



(2526-080)
Crosstown, Buff



(2858-010)
Lido, Hermosa



(3582-011)
Spinel, Opal



(3582-050)
Spinel, Sand Stone

Looking for something different?

While only displaying the colors and patterns standardized upon here, Custom Office Design has access to a vast range of colors available to us at similar pricing.

We encourage our customers to peruse our supplier's website for a wider selection to fulfill their project needs at their interest, <https://guilfordofmaine.com>

Request quote with custom selection to ensure pricing

All standardized Custom Office Design textile offerings adhere to the following performance guidelines as defined by the Association for Contract Textiles (ACT)



See Guilford of Maine product listing for exact product details

Custom Office Design

Surface Hardware Options (2023, Q3)

Please note: Screen/Print color may vary from actual product.

No Additional Charge to Include



#7 "U" Pull
96MM C-to-C
Brushed Nickel finish



#5 "Bow" Pull
96MM C-to-C
Matte Black finish

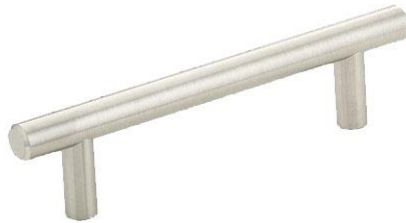
List Cost \$14/Each



#1 "Arched" Pull
128MM C-to-C
Matte Chrome finish



#2 "Curved" Pull
128MM C-to-C
Satin Nickel finish



#3 "Bar" Pull
96MM C-to-C
Brushed Nickel finish



#11 "Black Knob" Pull
1¼" Diameter Knob
Black Nickel finish



#12 "Nickel Knob" Pull
1¼" Diameter Knob
Brushed Nickel finish



#13 "Large Stat" Pull
50MM C-to-C
Brushed Black



#14 "Small Stat" Pull
25MM C-to-C
Brushed Black

Side Pulls (not depicted) also available at List Cost \$14/Each

List Cost \$40/Each



#9 "Black Spoon" Pull
32MM C-to-C
Matte Black



#10 "Nickel Spoon" Pull
32MM C-to-C
Matte Nickel