

# Custom Office Design

## Standard Laminate Finishes (2023, Q3)

Standard Laminates are available in 3/4" & 1-1/8" (Low Pressure TFM), and 1 1/4" & 1 3/4" Thick Material (High Pressure Laminate)

Please note: Screen/Print color may vary from actual product.

**Absolute Acajou**

**Note**  
Vashon Series  
not available  
with this finish



**Studio Teak**

**Blond Echo**



**Hardrock Maple**

**Summer Flame**



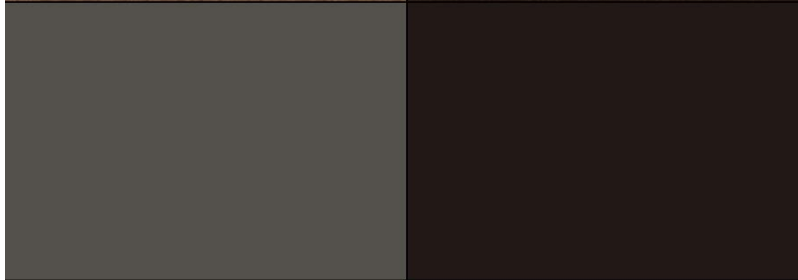
**Red Mahogany**

**Walnut Heights**



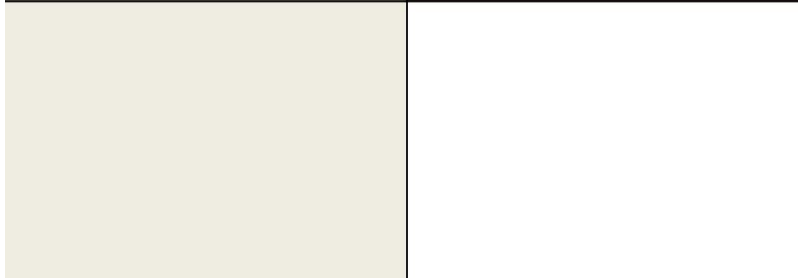
**Cafelle**

**Slate Grey**



**Black**

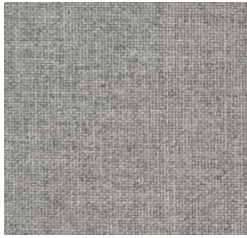
**White**



# Custom Office Design Standard Textiles/Fabric (2023, Q3)

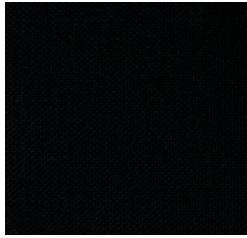
**Please note:** Screen/Print color may vary from actual product.

---



(2100-238)  
FR701, Grey Mix

---



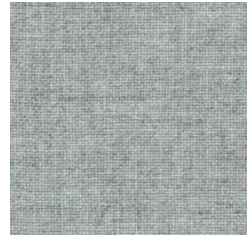
(2100-408)  
FR701, Black

---



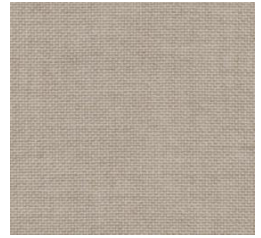
(2100-538)  
FR701, Silver Papier

---



(2100-561)  
FR701, Verte Papier

---



(2100-758)  
FR701, Desert Sand

---



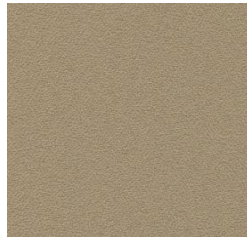
(2335-2027)  
Anchorage, Wolf

---



(2335-2034)  
Anchorage, Straw

---



(2335-2035)  
Anchorage, Angora

---



(2526-010)  
Crosstown, Cement

---



(2526-030)  
Crosstown, Ray

---



(2526-070)  
Crosstown, Stucco

---



(2526-080)  
Crosstown, Buff

---



(2858-010)  
Lido, Hermosa

---



(3582-011)  
Spinel, Opal

---



(3582-050)  
Spinel, Sand Stone

---

## Looking for something different?

While only displaying the colors and patterns standardized upon here, Custom Office Design has access to a vast range of colors available to us at similar pricing.

We encourage our customers to peruse our supplier's website for a wider selection to fulfill their project needs at their interest, <https://guilfordofmaine.com>

**Request quote with custom selection to ensure pricing**

All standardized Custom Office Design textile offerings adhere to the following performance guidelines as defined by the Association for Contract Textiles (ACT)



See Guilford of Maine product listing for exact product details

---

# Custom Office Design

## Surface Hardware Options (2023, Q3)

*Please note: Screen/Print color may vary from actual product.*

### No Additional Charge to Include



**#7 "U" Pull**  
96MM C-to-C  
Brushed Nickel finish



**#5 "Bow" Pull**  
96MM C-to-C  
Matte Black finish

### Additional Charge to Include (Tier 1)



**#1 "Arched" Pull**  
128MM C-to-C  
Matte Chrome finish



**#2 "Curved" Pull**  
128MM C-to-C  
Satin Nickel finish



**#3 "Bar" Pull**  
96MM C-to-C  
Brushed Nickel finish



**#11 "Black Knob" Pull**  
1¼" Diameter Knob  
Black Nickel finish



**#12 "Nickel Knob" Pull**  
1¼" Diameter Knob  
Brushed Nickel finish



**#13 "Large Stat" Pull**  
50MM C-to-C  
Brushed Black



**#14 "Small Stat" Pull**  
25MM C-to-C  
Brushed Black

Side Pulls (not depicted) also available at Tier-1 Additional Charge

### Additional Charge to Include (Tier 2)



**#9 "Black Spoon" Pull**  
32MM C-to-C  
Matte Black



**#10 "Nickel Spoon" Pull**  
32MM C-to-C  
Matte Nickel