



FR701
2100-758



Crosstown
2526-070



Anchorage
2335-2035



Crosstown
2526-030



Coastline
3495-040



Groove
3497-040



Spinel
3582-050



Spinel
3582-112



Lido
2858-010



Spinel
3582-011



Groove
3497-030



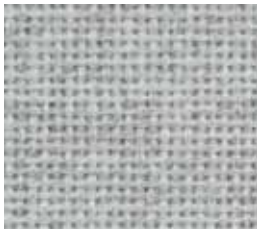
Crosstown
2526-080



Anchorage
2335-2034



Crosstown
2526-010



FR701
2100-538



FR701
2100-238



FR701
2100-408

Pattern	Content	Weight	Repeat	Grade	Flammability
Anchorage	35% post-consumer recycled polyester 65% pre-consumer recycled polyester	15.0 ± 1.0 oz./lin. yd.	none	1	ASTM E84 Class I or A
Coastline	34% post-consumer recycled polyester 66% pre-consumer recycled polyester	12.2 ± 1.0 oz./lin. yd.	16" vertical, 16.6" horizontal	1	ASTM E84 Class I or A
Crosstown	23% post-consumer recycled polyester 77% pre-consumer recycled polyester	13.6 ± 1.0 oz./lin. yd.	12.5" vertical, 16.2" horizontal	1	ASTM E84 Class I or A
FR701®	100% post-consumer recycled polyester	16.0 ± 0.5 oz./lin. yd.	none	1	ASTM E84 Class I or A
Groove	100% post-consumer recycled polyester	15.0 ± 1.0 oz./lin. yd.	20" vertical, 16.75" horizontal	2	ASTM E84 Class I or A
Lido	48% post-consumer recycled polyester 52% pre-consumer recycled polyester	11.5 ± 1.0 oz./lin. yd.	none	1	ASTM E84 Class I or A
Spinel	32% post-consumer recycled polyester 68% pre-consumer recycled polyester	11.8 ± 1.0 oz./lin. yd.	16.5" vertical and horizontal	1	ASTM E84 Class I or A

Width

66" min. useable

Cleaning Code

W-S

Performance



* Terratex is a registered trademark of True Textiles, Inc. and designates fabrics that are made from 100% recycled or compostable material using increasingly sustainable manufacturing practices to produce a high quality product that is recyclable at the end of its useful life.



* CO₂ emissions from 100% of the electricity used by the manufacturer to produce these products have been measured and offset in accordance with The CarbonNeutral Protocol.



These patterns are included in the underwriters laboratory panel fabric recognition program. Additional testing of these U.L. recognized component fabrics is not required on approved panels from participating manufacturers.

*ACT® registered certification marks.

Miscellaneous

This entire collection is proudly woven in the USA.
Colors may vary slightly between dye lots.
These are directional fabrics except FR701.
Application testing of these products is recommended.



Visit guilfordofmaine.com for complete specs and samples.